



Project Summary:

This project was tailored made to the specific customer's requirements and needs. The main goals were to create a building with a strong structure capable to resist up to category 3, 4 hurricanes, to have total operational continuity and to house high value equipment.

Project:

'24Tiger/CC-TX

Location:

Corpus Christi, TX

Type of Building:

Small Industrial

Size:

11,342 Sq.ft.

Dimensions:

174.5' x 65'

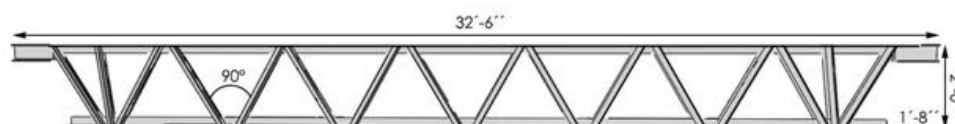
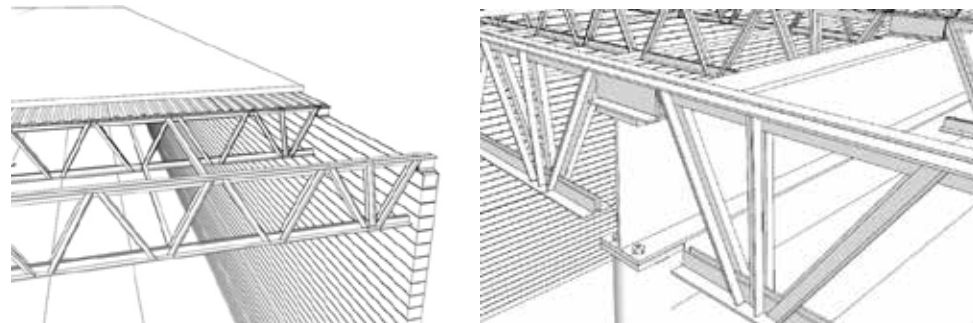
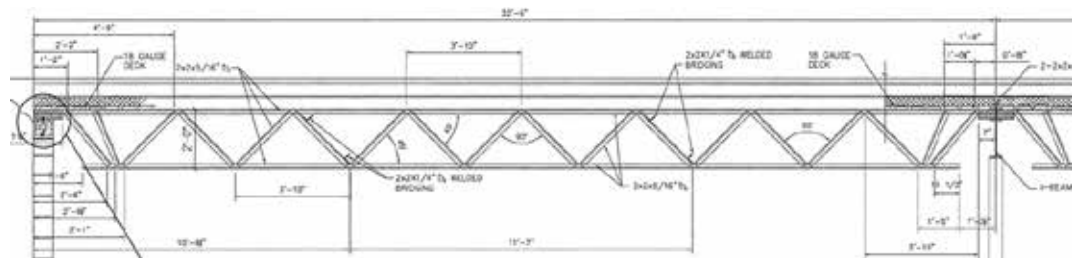
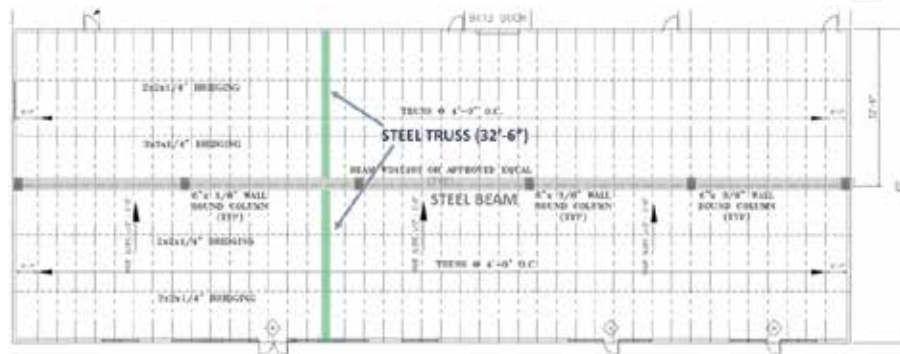
Total Joists:

84 joists of 32'6"

Wall to wall Joist Girder built in the middle of the building

Design Loads:

Dead Load (D):	35.63 \square lb/ft
Live Load (L):	80.17 lb/ft
Wind Load (W):	12.33 lb/ft
Snow Load (S):	2.05 lb/ft
Steel:	ASTM A36 (Fy=250 Mpa)
Method:	LRFD



For additional information

info@hexasteel.com www.hexasteelusa.com

HEXASTEEL USA